

Little House on the Prairie® Walnut Grove

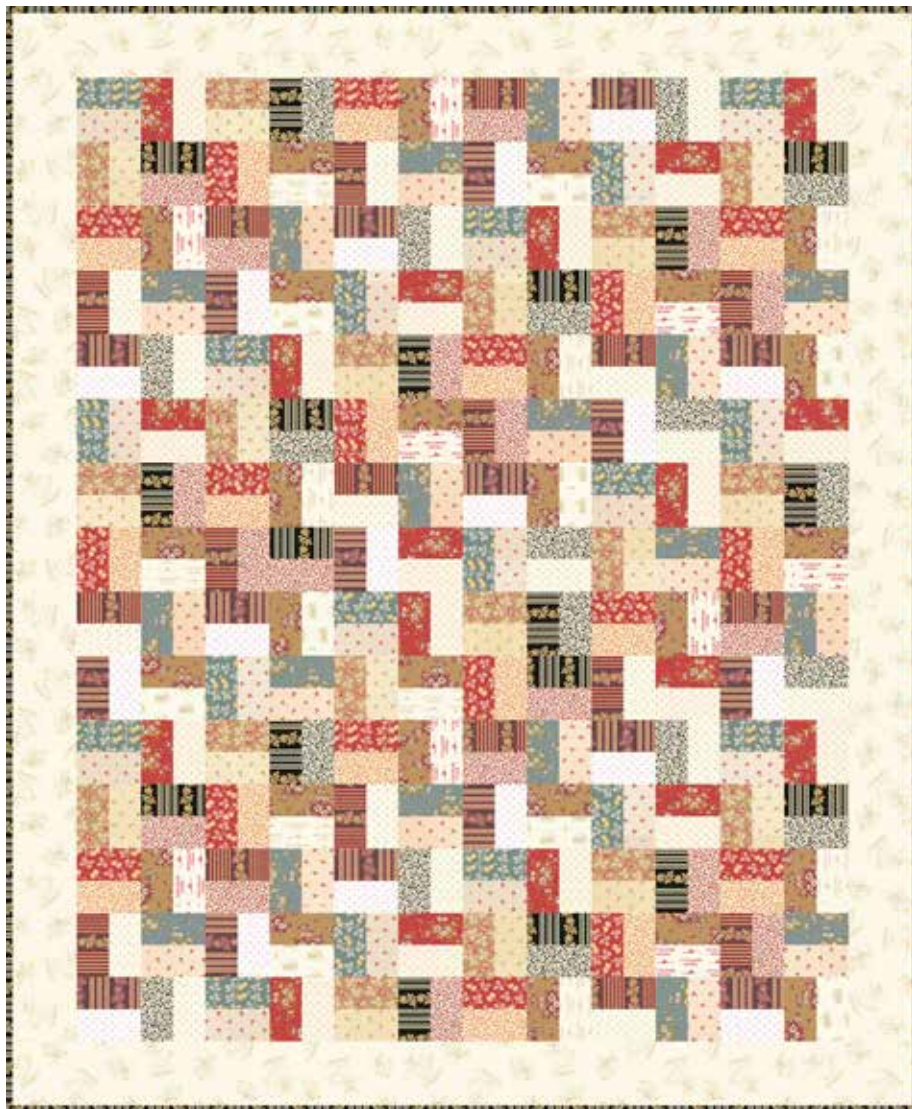
BY KATHY HALL



Logs and Ladders Quilt
designed by: **Jean Ann Wright**

Quilt Size: **58" x 70"**

andoverfabrics.com



LITTLE HOUSE ON THE PRAIRIE® and associated character names and trademarks are owned and licensed by Friendly Family Productions, LLC. All rights reserved. ©2015 Friendly Family Productions, LLC

andover

•
•
• **makower uk**
• *The Henley Studio*

Free Pattern Download Available

1384 Broadway New York, NY 10018
Tel. (800) 223-5678 • andoverfabrics.com

Logs and Ladders Quilt



Introducing Andover Fabrics new collection:

Little House on the Prairie® – WALNUT GROVE by Kathy Hall

Quilt design by Jean Ann Wright

Quilt finishes 58" x 70"

Two-patch units are cleverly arranged to form stair steps that move diagonally across this scrappy quilt. The piecing is as easy as it gets, and you'll have fun choosing your own combinations of light and dark prints.

Fabric Requirements

		Yardage	Fabric
2½" Strips Packet	blocks	1 packet	
Fabric A	border	1¾ yards	7924-L
Fabric B	binding	5/8 yard	7954-TK
Backing		3¾ yards	7923-L

Cutting Directions

Note: Read assembly directions before cutting patches. All measurements are cut sizes and include ¼" seam allowances. Borders are cut the exact lengths required plus ¼" seam allowances. WOF designates the width of fabric from selvedge to selvedge (approximately 42" wide).

2½" Strips Packet

Read Step 1

Fabric A

Cut (2) side borders 5½" x 60½"

Cut (2) top/bottom borders 5½" x 58½"

Fabric B

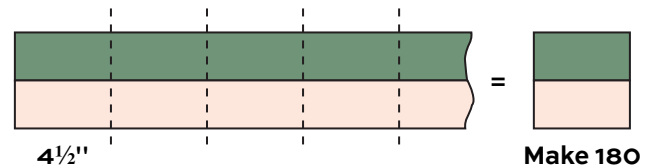
Cut (7) strips binding 2½" x WOF

Backing

Cut (2) panels 39" x 66", pieced to fit quilt top with overlap on all sides

Making the Quilt

1. Feel free to join the light and dark fabrics in any combination you wish, or refer to the quilt photograph. Position 1 dark strip on top of 1 light strip, right sides together, and stitch a scant ¼" seam along the long edge. Press the seam allowance toward the dark strip. The band should measure 4½" wide. If it does not, adjust your stitching and/or pressing. Cut the band into 9 segments 4½" long. Be sure that the unit is 4½" square. Repeating these steps, combine 20 pairs of light and dark strips to make a total of 180 units.

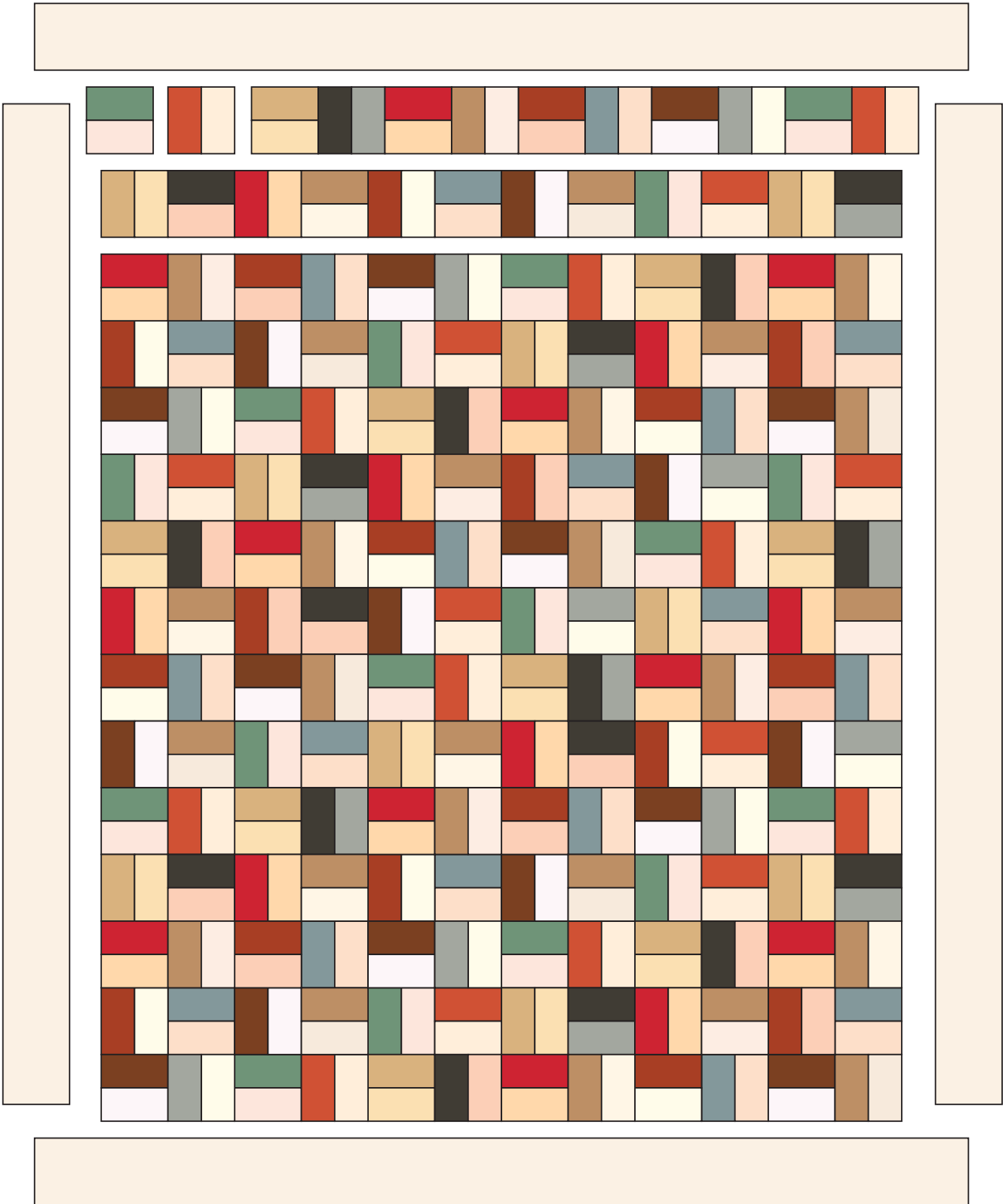


2. Arrange 12 units into each of 15 horizontal rows. Be sure that units with the same fabric are separated. Note that alternating units are rotated so the dark patches touch to form the zigzag design. Hint: The first unit in each odd-numbered row has the seam oriented horizontally; the first unit in each even-numbered row has the seam vertical. Stand back to be sure that the zigzag design is uninterrupted. Looking through the wrong end of binoculars may help you spot any mistakes. Once you are satisfied with the arrangement, join the units into rows, and then join the rows.
3. Sew long borders to the sides. Sew short borders to the top and bottom.

Finishing the Quilt

4. Layer the quilt with batting and backing and baste. Quilt in the ditch around all patches. Quilt the border as desired. Bind to finish the quilt.

Logs and Ladders Quilt



Quilt Diagram

Little House on the Prairie Walnut Grove



BY KATHY HALL



7953-N



7953-R



7953-T



7954-N



7954-RN



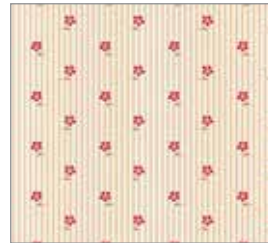
7954-TK



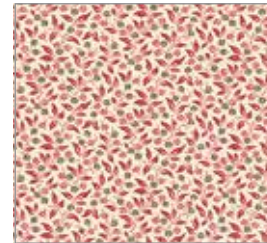
7923-L



7955-N



7956-N



7957-NR



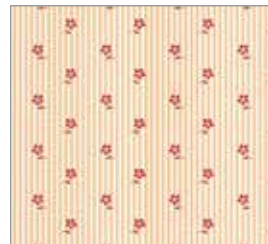
7958-NL



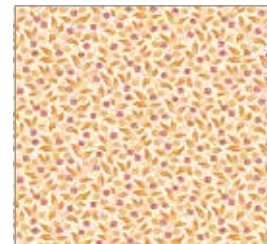
7924-L



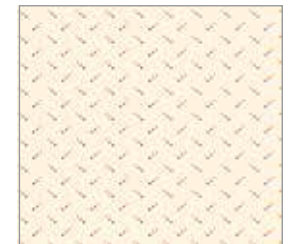
7955-R



7956-RL



7957-RO



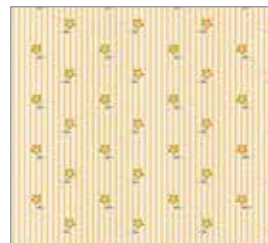
7958-RL



7925-L



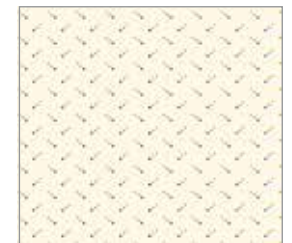
7955-T



7956-TL



7957-TK



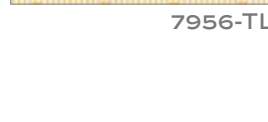
7958-TL



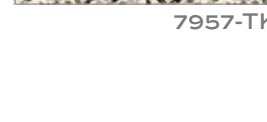
7982-L



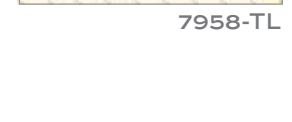
7955-T



7956-TL



7957-TK



7958-TL

7982-R

All fabrics are used in quilt pattern. Fabrics shown are 25% of actual size.

andover

• makower uk
• The Henley Studio

Free Pattern Download Available

1384 Broadway New York, NY 10018
Tel. (800) 223-5678 • andoverfabrics.com